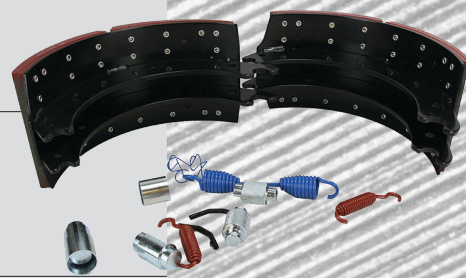
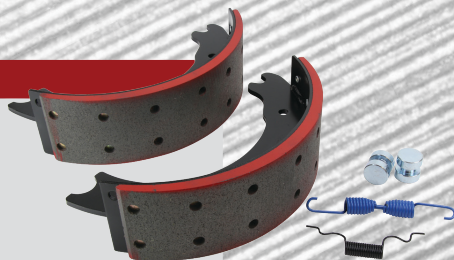


# **MPG**

**TRUCK PARTS**



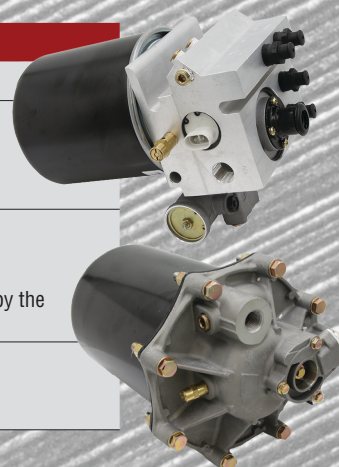
MPG #:	REPLACES #:	DESCRIPTION:	PRODUCT INFORMATION:
MPG-1443E	1443E	Brake Shoe Kit	Eaton ES Front Brake Systems New, No Core 23K 312 Lining Consists Of 2 Shoes & Hardware Kit Length: 15" (38.1cm) Width: 4" (10.16cm)
MPG-4515Q	4515Q	Brake Shoe Kit	Meritor P Brake Systems New, No Core 23K 312 Lining Consists Of 2 Shoes & Hardware Kit Length: 16 1/2" (41.9cm) Width: 7" (17.8cm)
MPG-4702Q	4702Q	Brake Shoe Kit	Meritor Q Plus Front Brake Systems New, No Core 23K 312 Lining Consists Of 2 Shoes & Hardware Kit Length: 15" (38.1cm) Width: 4" (10.16cm)
MPG-4707Q	4707Q	Brake Shoe Kit	Meritor Q Plus Brake Systems New, No Core 23K 312 Lining Consists Of 2 Shoes & Hardware Kit Length: 16 1/2" (41.9cm) Width: 7" (17.8cm)
MPG-4709E2	4709E2	Brake Shoe Kit	Eaton ES2 Brake Sytems New, No Core 23K 312 Lining Consists Of 2 Shoes & Hardware Kit Length: 16 1/2" (41.9cm) Width: 7" (17.8cm)



MPG #:	REPLACES #:	DESCRIPTION:	PRODUCT INFORMATION:
MPGS-10043	12-008DSP	Gladhand - Emergency	1/2" Gladhand, Color Coded Red for Emergency
MPGS-10044	12-006DSP	Gladhand - Service	1/2" Gladhand, Color Coded Blue For Service
MPGS-10047	12-138DSP	Gladhand, Angled-Emergency	40° Bracket Mount Includes 3/8" Pipe Plug Color Coded Red for Emergency



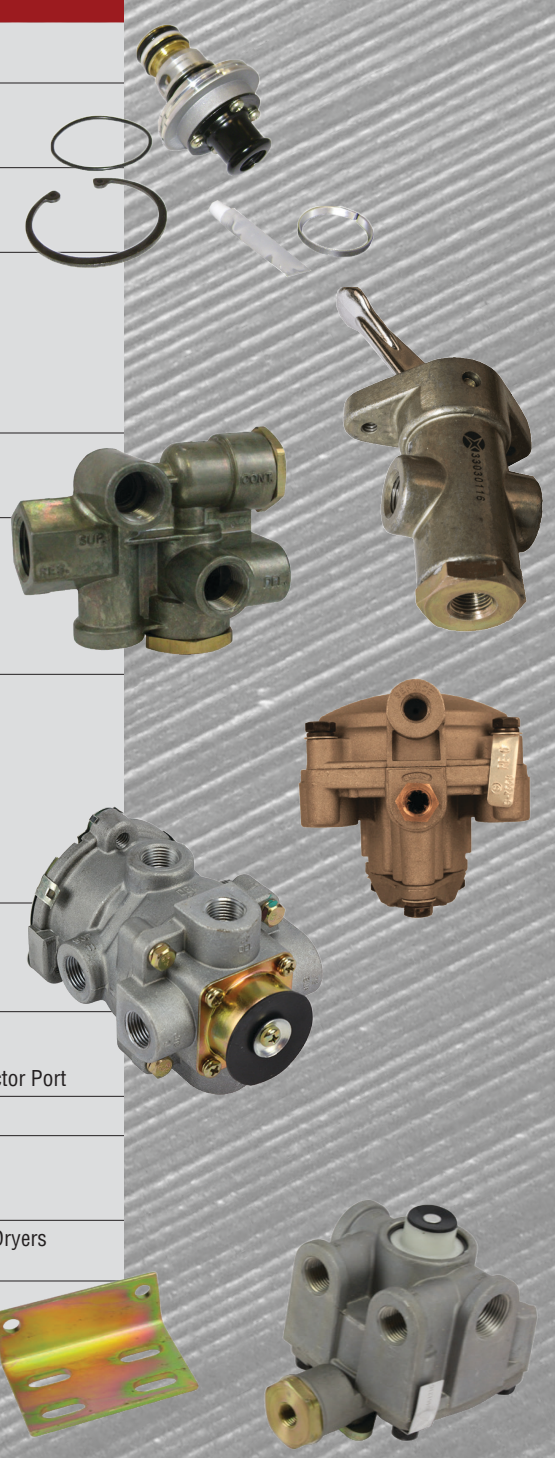
MPG #:	REPLACES #:	DESCRIPTION:	PRODUCT INFORMATION:
MPGS-26293	801266	Air Dryer Assembly (AD-IS)	—
MPGS-F345	065225 109685	Air Dryer Assembly - 12 Volt	Replacement for Bendix AD-9™ 12 Volt Includes Bracket Assembly MPGS-16027 New/No Core Charge & Includes Seal Ring Kit
MPGS-23097	065612 109477	Air Dryer Assembly (AD-IP) - 12 Volt	New/No Core Charge Replacement for Bendix AD-IP™ 12 Volt Contains automatic Drain Valve which is controlled by the Governor, along with a In-Line Filtration System
MPGS-A323	109994 5008414 AC1001	Air Dryer Cartridge	Replacement for Bendix AD-SP™ Replacement for Meritor SS1200 & SS1200P New/No Core Charge & Includes Seal Ring Kit



# AIR & BRAKE COMPONENTS



MPG #:	REPLACES #:	DESCRIPTION:	PRODUCT INFORMATION:
MPGS-20219	110500X	Spring Brake Control Valve	Replacement For Sealco® Spring Brake Priority
MPGS-22889	12104	Drain Valve	REPLACEMENT FOR HALDEX® Ports: 1/4 NPT Male Thread Manual, Includes 4ft Cable
MPGS-5676	229617	Control Valve (TW-1)	Replacement For Bendix Tw-1™ Ports: 1/8 NPT Includes Chrome Plated Flip Handle
MPGS-6006	102626	Relay Valve (R-12)	Replacement For Bendix R-12™ Delivery: (4) 1/2" Supply: 1/2" Control: 1/4" Crack Pressure: 4 PSI Core Group: 121RLV Vertical Delivery Ports
MPGS-4771	286171	Brake Valve (E-6)	Replacement for Bendix E-6™ 3/8 NPT supply & Delivery ports (4) Dual circuit valve
MPGS-7558	281865	Relay Valve (R-6)	"Delivery: (2) 3/8" & (2) 1/4" Control/Service: 1/4" Supply: (1) 3/8" & (1) 3/4" Emergency: 1/4" Crack Pressure: 4.5 PSI Replacement For Bendix Re-6™
MPGS-8255	103010	Relay Valve (R-14)	Delivery: (2) 1/2" Supply: (2) 3/4" Control/Service: 1/4 Crack Pressure: 4 PSI Core Group: 121RLV Balance Port: 1/8" Cover Rotated 90 degrees CW Replacement For Bendix R-14™ Horizontal Delivery Ports
MPGS-9749	289714	Quick Release Valve (QR-1C)	Supply: 1/4" Delivery: (2) 3/8" Balance: 1/4" Replacement for Bendix QR-1C
MPGS-C068	4000-8D	Inline Quick Release Valve	Replacement For GT® Mounts to Tractor Protection Valve 1/2" NPTM Trailer Port, 1/2" NPTF Tractor Port
MPGS-23282	RKN20619	Manifold Dash Control Valve	Replacement For Haldex™
MPGS-8884	M-1322 VL2143	Drain Valve	Replacement For Haldex® Ports: 1/4 NPT Male Thread Manual, Includes 5ft Cable"
MPGS-17760	K022105	Purge Assembly Kit - "New" Style	Works w/ Bendix AD-IP & AD-IS™ Air Dryers High Boost
MPGS-A568	5005037	Purge Valve Kit	Works w/ Bendix AD-9™ Air Dryers Includes Hard Seat Piston Assembly



MPG #:	REPLACES #:	DESCRIPTION:	PRODUCT INFORMATION:
MPGS-16924	800522	Control Valve (MV-3)	Replacement for Bendix MV-3™ Type 2 Plate (Flat) Mounting Holes: M6 X 1-6H Threads (4), Ports: 1/8" NPT
MPGS-16928	800259	Control Valve (MV-3)	Replacement For Bendix MV-3™ Mounting Hole Threads: 1/4"-20, Ports: 3/8" PTC
MPGS-16929	800257	Control Valve (MV-3)	Replacement For Bendix MV-3™ Type 1 Plate (Recessed) Mounting Holes: 0.275" Open (4) 9/32 Open Mounting Holes Ports: PTC
MPGS16932	800523	Control Valve (MV-3)	Replacement For Bendix MV-3™ Mounting Hole Threads: 10-24", Port: 1/4" NPT
MPGS-16933	800573	Control Valve (MV-3)	Replacement for Bendix MV-3™ Mounting Threads: 1/4"-20 (4), Ports: 1/4" NPT
MPGS-16988	800516	Control Valve (MV-3)	Replacement For Bendix MV-3™ Replacement for Midland Type 1 Plate (Recessed) Mounting Holes: 0.275" Open (4) Ports: 1/4" NPT
MPGS-21729	801631	Control Valve (MV-3)	Replacement For Bendix Mv-3™ Type 4 Plate Mounting Holes: 0.200" Open (4) Ports: PTC (Elbows)
MPGS-21897	800260	Control Valve (MV-3)	Replacement For Bendix Mv-3™ Mounting Hole Threads: M5 X 8-6, Ports: 3/8" PTC
MPGS-23875	802122	Control Valve (MV-3)	Replacement For Bendix Mv-3™ Mounting Hole Threads: 0.275" Open (4), Ports:PTC



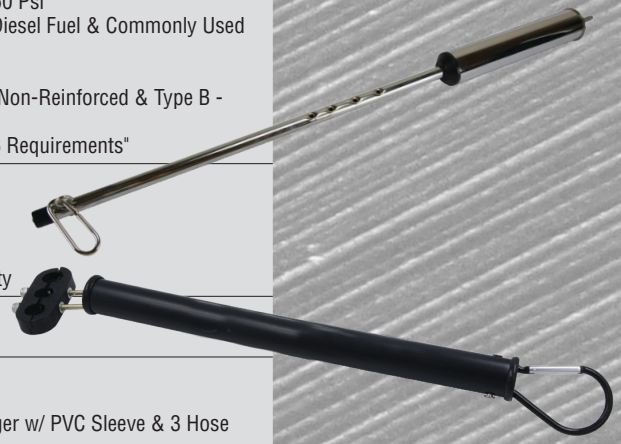
MPG #:	REPLACES #:	DESCRIPTION:	PRODUCT INFORMATION:
MPGS-23116	HE22051 11-260DSP	Nylon Tubing Diameter: 1/4"	Black Type: A Minimum Bend: 1" UV & O-zone Resistant Maximum Operating Temperature: -40° To 200°F Maximum Operating Pressure: 150 Psi Resistant to Attack by Gasoline, Diesel Fuel & Commonly Used Road & Cleaning Chemicals Not Made for Fuel Conforms to SAE J844 (Type A - Non-Reinforced & Type B - Reinforced) & FMVSS106 Meets or Exceeds Dot FMVSS106 Requirements
MPGS-23122	HE2260 11-270DSP	Nylon Tubing Diameter: 5/8"	Black Type: B Minimum Bend: 2 1/2" UV & O-zone Resistant Maximum Operating Temperature: -40° To 200°F Maximum Operating Pressure: 150 Psi Resistant to Attack by Gasoline, Diesel Fuel & Commonly Used Road & Cleaning Chemicals Not Made for Fuel Conforms to SAE J844 (Type A - Non-Reinforced & Type B - Reinforced) & FMVSS106 Meets or Exceeds Dot FMVSS106 Requirements



# AIR & BRAKE COMPONENTS



MPG #:	REPLACES #:	DESCRIPTION:	PRODUCT INFORMATION:
MPGS-23133	HE2221 11-262DSP	Nylon Tubing Diameter: 3/8"	Black Type: B Minimum Bend: 1 1/2" UV & O-zone Resistant Maximum Operating Temperature: -40° To 200°F Maximum Operating Pressure: 150 Psi Resistant to Attack by Gasoline, Diesel Fuel & Commonly Used Road & Cleaning Chemicals Not Made for Fuel Conforms to SAE J844 (Type A - Non-Reinforced & Type B - Reinforced) & FMVSS106 Meets or Exceeds Dot FMVSS106 Requirements"
MPGS-23127	HE2234 11-264DSP	Nylon Tubing Diameter: 1/2"	Black Type: B Minimum Bend: 2" UV & O-zone Resistant Maximum Operating Temperature: -40° To 200°F Maximum Operating Pressure: 150 Psi Resistant to Attack by Gasoline, Diesel Fuel & Commonly Used Road & Cleaning Chemicals Not Made for Fuel Conforms to SAE J844 (Type A - Non-Reinforced & Type B - Reinforced) & FMVSS106 Meets or Exceeds Dot FMVSS106 Requirements"
MPGS-C333	11-315DSP	Air Hose, Coiled 15' w/ 12" Leads	SAE J844 Compliant Cold Weather Resistant Plated Spring Guards 150 PSI Operating Systems Excellent Coil Memory & Durability
MPGS-18626	17-0400DSP	Hose Tender (Pogostick)	—
MPGS-24060	17-148DSP	Single Hose Tender Kit	Length: 16" Spring Dimensions: 1" x 15.42" Heavy Duty Spring & Clamp Hanger w/ PVC Sleeve & 3 Hose Holder



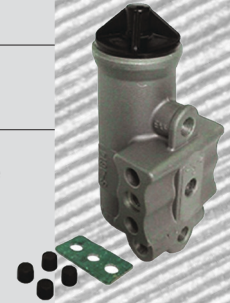
MPG #:	REPLACES #:	DESCRIPTION:	PRODUCT INFORMATION:
MPGS-19077	R810019	Clevis	5/8 Threads Works w/ Meritor Automatic Slack Adjusters
MPGS-21431	9111535100 4318216	Air Compressor NS318	Replacement For WABCO NS318 Components are 100% Interchangeable W/ OEM New Outright No Core Charges Cubic Feet Per Minute: 18.7 Bore Size: 85mm Water Ports: M18 - 1.5 STOR Discharge Ports: M27 - 2.0 STOR Governor Ports: M10 - 1.0 STOR
MPGS-21686	10028 12-012-100DSP	Rubber Gladhand Seal	Black
MPGS-22055	R955342	Wheel Speed Sensor	Replacement For Wabco® Body Type: 90° Right Angle 78"/1981mm Connector Type: Black Cannon
MPGS-22908	801538	Wheel Speed Sensor	Replacement for Bendix® Body Type: 90° 75"/1905mm Connector Type: White Cannon





# AIR & BRAKE COMPONENTS

MPG #:	REPLACES #:	DESCRIPTION:	PRODUCT INFORMATION:
MPGS-24462	84103	Straight Union Brass PTC Fitting	Works w/ SAE J844 Nylon Tubing Meets DOT FMVSS71.106 & SAE J1131, J2494 Standards -40° to 200° Temperature Range Saves 75% Assembly Time Over Standard Compression Fittings Full Flow Design Positive Release Bushing for Ease of Insertion & Removal of Tubing Thread Sealant Applied to All Male Pipe Threads to Reduce Installation Time Maximum Operating Pressure 150 PSI
MPGS-25075	08-02347	Air Tank	Single Chamber Black Powder Coat Finish 7 ports
MPGS-6106	275491	Air Governor-D2	Passed The SAE Standards Endurance Test 130 PSI Input Pressure & Delivery, Exhausted in a 4 Second Cycle +200,000 Times Standard Replacement for Bendix D-2™ All Ports 1/8 NPT Includes 4 Plugs & Mounting Gasket Pre-set at 125 PSI For 130 PSI Use S-11874
MPGS-9686	84005	Brass Fitting	Replacement For Bendix® PTC 5/32" Tubing x 1/16" NPT Male Connector
MPGS-D680	AS3000-10	Clevis	Works w/ Automatic Slack Adjusters



# CAB & BODY COMPONENTS



MPG #:	REPLACES #:	DESCRIPTION:	PRODUCT INFORMATION:
MPGS-25391	C2-33-21-3	Toolbox Hood Latch	—
MPGS-25433	13-04730L	Hood Pivot Assembly, LH	—
MPGS-25434	13-04730R	Hood Pivot Assembly, RH	—
MPGS-25435	23-15273	Hood Pivot Bolt Kit	—
MPGS-25562	L48-6026	Hood Pivot Mount, LH	—
MPGS-25563	L48-6026R	Hood Pivot Mount, RH	—
MPGS-23344	13-04164	Bushing Hood, Pivot	I.D.: 0.5" Height: 0.625" Length: 2.23" Width: 1.95" Small O.D.: 1.13"
MPGS-21822	13-04711	Hood Rest	—
MPGS-21204	L03-0001	Hood Hook	—
MPGS-20541	L92-6000-0718	Cable Hood, Restraint	—
MPGS-20896	13-04154	Hood Pivot Bushing	Thickness: 7/16", 1/2" Bolt
MPGS-20934	13-04638	Hood Spring	Blue Spring, For Use With 119" Hood
MPGS-21319	L34-6021	Hood Pivot Bolt	5/8"-11 Socket Head W/ Cotter Pin Hole
MPGS-18892	L56-0001	Hood Latch	—
MPGS-19901	K147-107	Hood Latch	—



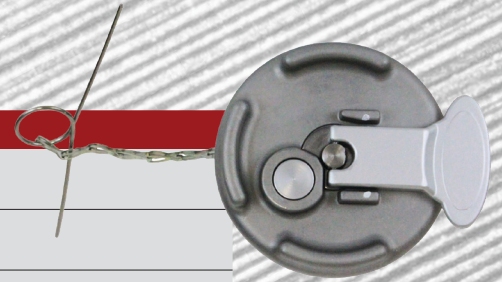
MPG #:	REPLACES #:	DESCRIPTION:	PRODUCT INFORMATION:
MPGS-19903	R23-6002	Wiper Arm	Same Arm For Both Left & Right Side
MPGS-19978	20-08179L	Outside Door Handle, LH	—
MPGS-19979	20-08179R	Outside Door Handle, RH	—
MPGS-20101	066011A	Wiper Fluid Pump	—
MPGS-22005	20-08229L	Door Latch, LH	—
MPGS-22006	20-08229R	Door Latch, RH	—
MPGS-22185	R21-6009R	Window Regulator, RH	Plug & Play
MPGS-22186	R21-6009	Window Regulator, LH	Plug & Play
MPGS-22725	600228S	Windshield Washer Pump	Includes Grommets (012-513 & 012-512)
MPGS-23436	T4695001	Windshield Washer Pump	Includes Grommet & Washer Bottle
MPGS-25257	R60-6001-650	Door Seal	—
MPGS-21200	20-12972	Striker Pin	—





## CAB & BODY COMPONENTS

MPG #:	REPLACES #:	DESCRIPTION:	PRODUCT INFORMATION:
MPGS-20269	11-04859-200	Fuel Cap	Lever Locking W/ Keys Vented
MPGS-20270	11-04859-100	Fuel Cap	Lever Style Non-Locking Vented
MPGS-21251	490-89	Fuel Cap O-Ring	Works W/ MPGS-20270 & MPGS-20269
MPGS-25077	11-02331-000	Fuel Tank Strap Liner	w/o Glue



MPG #:	REPLACES #:	DESCRIPTION:	PRODUCT INFORMATION:
MPGS-21294	15-06080	Fender Liner	Sold Single
MPGS-22166	15-04905M001L5 FN4905L	Fender, LH	Pre-Drilled
MPGS-22167	15-04905M001R5 FN4905R	Fender, RH	Pre-Drilled
MPGS-25593	L85-6036	Front Fender Support, LH	—
MPGS-25594	L85-6036R	Front Fender Support, RH	—



MPG #:	REPLACES #:	DESCRIPTION:	PRODUCT INFORMATION:
MPGS-20938	N5348001	Surge Tank Cap	15 PSI Works W/ Surge Tank MPGS-23610
MPGS-21197	18-02123	Mirror Support Arm	Works W/ Mounting West Cost Mirrors Conventional Heavy Duty Safety Yoke Mirror Extends Out From Brackets
MPGS-21373	01-45151M000	Crossmember	—
MPGS-21609	SR59-6117-18	Convex Mirror	Available Separately
MPGS-23610	ST6000 T1673008	Surge Tank	Check Valve & Cap Included
MPGS-22696	3-2048-3	Headlamp Bezel, LH/RH	—
MPGS-23798	16-09190L	Headlamp Assembly, LH	W/O Harness 12 Volts, 55 Watts
MPGS-23799	16-09190R	Headlamp Assembly, RH	W/O Harness 12 Volts, 55 Watts
MPGS-23845	N9267001	Fluid Level Sensor	Works W/ Surge Tank MPGS-23610
MPGS-24293	15-05717 N03-6001	Hold Down Battery Hook	—

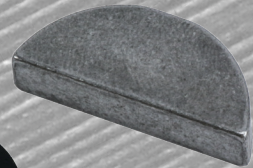
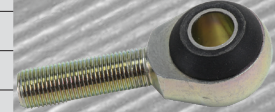




# DRIVETRAIN COMPONENTS



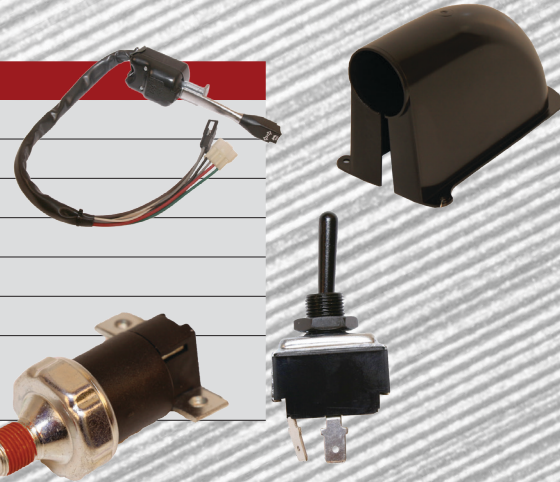
MPG #:	REPLACES #:	DESCRIPTION:	PRODUCT INFORMATION:
MPGS-19216	06-01067	Clutch Pedal Spring	Works W/ Manual Clutch
MPGS-21363	06-00754	Clutch Pedal Pad	—
MPGS-22057	06-00715	Clutch Shaft Lever	Works W/ MPGS-23812
MPGS-22339	06-01088	Clutch Linkage Assembly	—
MPGS-23812	06-00910M014	Adjusting Lever	Fuller RT, RTO & RTLO Transmissions Works W/ MPGS-22057 Clutch Arm
MPGS-24204	05-11695	Woodruff Key	1/4" X 1 1/8" Clutch Shaft
MPGS-25795	J21270-14	Clutch, Rod End	—
MPGS-5761	12815	Clutch Shaft Bushing	—
MPGS-20475	03-01568	Hubcap Gasket	—
MPGS-22814	K-4148	Speed Sensor Kit	New Push-in type Single pick-up (2-pin)
MPGS-23406	S09-6000	Shift Boot	Diameter : 7.25
MPGS-5617	95206	Nut	Thread Size: 1.500-18UNEF Torque: 560-700 Ft-Lb Socket Size: 2 1/4"
MPGS-7667	107276SETN	Tube Kit	Gasket, RTV 30Z. Sealant
MPGS-A726	4305294	Gasket w/ Silicone Beading	Gasket, Shift Lever Housing
MPGS-D969	85003	Elbow	Replacement For Bendix® 5/32" PTC Tubing x 1/8" NPT Elbow Assembly: 90°
MPGS-5761	12815	Clutch Shaft Bushing	—



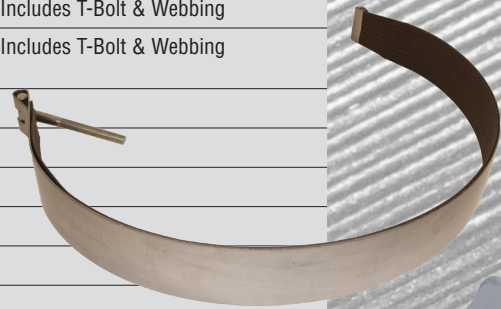


# ENGINE COMPONENTS

MPG #:	REPLACES #:	DESCRIPTION:	PRODUCT INFORMATION:
MPGS-21291	CB12100	Relay	2 Prong, 2 Terminal Bosch Type
MPGS-21461	16-07571	Firewall Cover	—
MPGS-21767	16-04996	Limit Switch	Applications Equipped w/ Jake Brake
MPGS-22016	16-03399	Toggle Switch	—
MPGS-22041	16-06657	Toggle Switch	—
MPGS-22298	BA26900	Momentary Switch	70 PSI
MPGS-A859	POT/VF4-15F11 CB12650	Micro Relay	5 Terminal 10 Amp 12 Volt



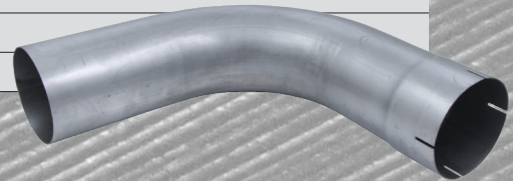
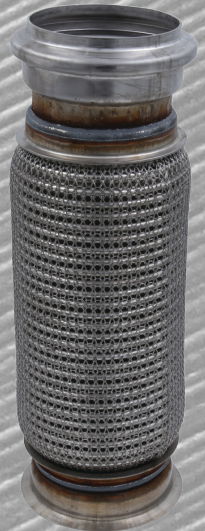
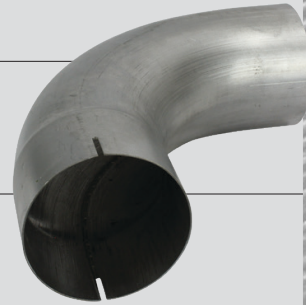
MPG #:	REPLACES #:	DESCRIPTION:	PRODUCT INFORMATION:
MPGS-18501	05-10197	Motor Mount	—
MPGS-19502	F31-6049 222101 BHPE20B PEDAC-20BA LPPB9220B	Charge Air Cooler	—
MPGS-20014	13-03096	Radiator Mount	Flange 1/4" Nipple
MPGS-20417	11-03596	Fuel Tank Strap	26 In. Diameter Fuel Tank w/T Bolt mounting wo/ Webbing
MPGS-20419	11-04551-001	Fuel Tank Strap	Works w/ 26 Diameter Fuel Tank, Includes T-Bolt & Webbing
MPGS-20420	11-04551-001P	Fuel Tank Strap	Works w/ 26 Diameter Fuel Tank, Includes T-Bolt & Webbing Polished
MPGS-20894	MR1001	Engine Mount	Two Piece Design
MPGS-21338	07-02552	Radiator Mount	—
MPGS-21714	Q21-1002	Temperature Sensor	—
MPGS-22123	RC1630	Radiator Cap	16 PSI
MPGS-22892	2866337	Exhaust Manifold Gasket, DPF	Works w/ 5 V-Band Clamps
MPGS-23191	4928594	EGR Pressure Sensor	—
MPGS-23319	4920093	Engine Housing Gasket	—
MPGS-23492	3682710	Exhaust Manifold Gasket	—
MPGS-23791	07-06657A011 239208 LPP492	Radiator	Includes Tank & Side Channels. Copper/Brass w/ 3 Row High Efficiency Reversible Lower Connection
MPGS-23813	3689465	Idler Pulley	—
MPGS-23922	4965698	Exhaust Manifold Bolt	—
MPGS-25202	140401	Temperature Sensor	Ametek Dixon Design
MPGS-26031	F04-6006	Elbow	Diameter: 2.50" Silicone
MPGS-26618	971370ETN	Cap, Knuckle	Weight: 0.29



# ENGINE COMPONENTS



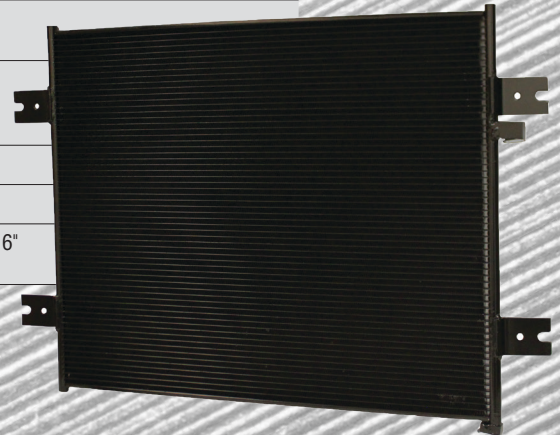
MPG #:	REPLACES #:	DESCRIPTION:	PRODUCT INFORMATION:
MPGS-22685	EC50PLA	Exhaust Clamp, Aluminized 5"	—
MPGS-22686	EC50PLS	Exhaust Clamp, Stainless Steel 5"	—
MPGS-23250	2871863	V-Band Clamp	Nominal Diameter: 13.30"
MPGS-25059	EP50EL90123A	Exhaust Elbow	90° Elbow Diameter: 5" Overall Leg Length 1: 12.5" Overall Leg Length 2: 12.5" Center Line Radius: 8"
MPGS-25060	EP50EL90220A P207331	Exhaust Elbow	90° Elbow Diameter: 5" Overall Leg Length 1: 15.5" Overall Leg Length 2: 15.5" Center Line Radius: 6"
MPGS-25061	EP50EL90120A	Exhaust Pipe	90° Elbow Diameter: 5" Overall Leg Length 1: 15.5" Overall Leg Length 2: 15.5" Center Line Radius: 6"
MPGS-25235	M66-7091-0320 EBPB11861	Exhaust Bellow	True Three Layered Bellows W/ All Benefits Of Proprietary Unit Gasket: MPGS-24198 Clamp: 90-001
MPGS-25236	M66-7091-0335	Exhaust Bellow	True Three Layered Bellows W/ All Benefits Of Proprietary Unit Gasket: MPGS-24198 Clamp: 90-001
MPGS-25237	M66-7091-0405 EBPB11863	Exhaust Bellow	True Three Layered Bellows W/ All Benefits Of Proprietary Unit Gasket: MPGS-24198 Clamp: 90-001
MPGS-25245	M66-4111	Exhaust Bellow	True Three Layered Bellows W/ All Benefits Of Proprietary Unit Gasket: 35813 Clamp: 58810
MPGS-25479	14-14256	Exhaust Pipe	64°
MPGS-25492	EP50YTUBE5	Y-Pipe Exhaust	—
MPGS-25599	90-0013	V-Band Exhaust Clamp	—
MPGS-25600	90-0012	V-Band Exhaust Clamp	—





# HVAC COMPONENTS

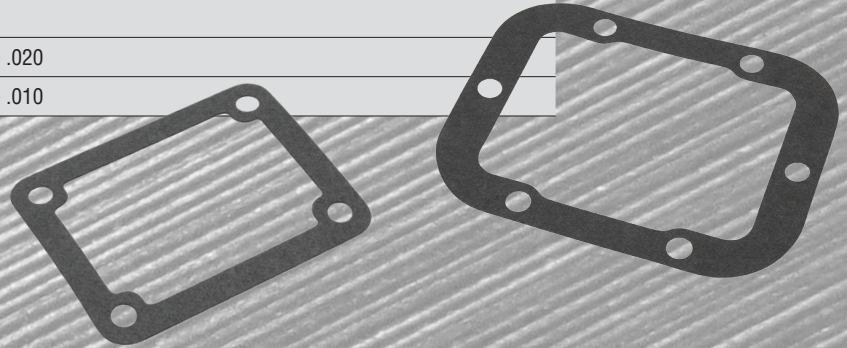
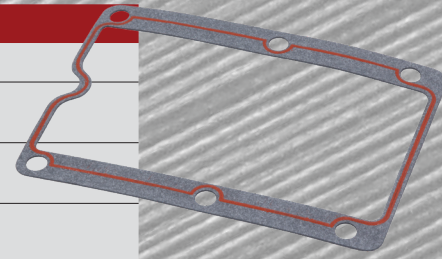
MPG #:	REPLACES #:	DESCRIPTION:	PRODUCT INFORMATION:
MPGS-16104	HE8716	Turbo Hose	—
MPGS-18821	18-04015 F31-6097 PB40150	Condenser	Radiator Mount
MPGS-20160	F31-6043	Condenser	Radiator Mount Pad Fittings Inlet: Pad Outlet: Pad Type: Parallel Flow Refrigerant Type: R12/R134a
MPGS-20903	K301-370-1 18-03835	A/C Pressure Switch	High Side Switch Normally Closed Fitting Connector: M10-1.25 Female Integral 2 Pin Closes At: 330-370 PSI Opens At: 180-240 PSI
MPGS-20904	18-03836	A/C Pressure Switch	Fan Override (Highside) – 12 Volt, Gray Normally Open Fitting Connector: M10-1.25 Female Integral 2 Pin Closes At: 270 PSI Opens at: 200 PSI
MPGS-21278	MB0201-01S	Actuator	Piano Type Red C Series (Fresh Air)
MPGS-21331	MA0200-01S	Actuator	Piano Type Red "D" Series Servo, 104° Max Travel
MPGS-21764	5S013817	Cabin Air Filter	Filter w/ Frame
MPGS-21765	23-15619	Cabin Air Filter	—
MPGS-26742	X1987001	Cabin Air Filter	Dimensions: 8 15/16" x 7 7/8" x 1 3/16" Filter only, no casing



# PTO COMPONENTS



MPG #:	REPLACES #:	DESCRIPTION:	PRODUCT INFORMATION:
MPGS-13786	13T38541	Gasket	Parts Are 100% Interchangeable w/ Muncie TG8 Series
MPGS-C717	35P15-1	Mounting Gasket	.010 8 Bolt Parts Are 100% Interchangeable w/ Muncie TG8 Series
MPGS-C718	35P15-2	Mounting Gasket	.020 8 Bolt Parts Are 100% Interchangeable w/ Muncie TG8 Series
MPGS-E613	30TK4124	Ball Switch	Normally Open Parts Are 100% Interchangeable w/ Muncie TG8 Series
MPGS-E716	35P8	Gasket Shifter Cover	—
MPGS-F063	35P9-2	6 Hole PTO Gasket	6 Hole .020
MPGS-F064	35P9-1	6 Hole Direct Mount PTO Gasket	6 Hole .010





# SUSPENSION COMPONENTS

MPG #:	REPLACES #:	DESCRIPTION:	PRODUCT INFORMATION:
MPGS-15468	16-16412-000 52296	Leaf Spring Bushing - Old Style	Outside Diameter: 2 1/2" Misc: Bolt Hole: 3/4"; Bolt Holes: 5 21/32" c-c Qty per vehicle: 2 Anti-Walk High Confinement Old Style New Style version : MPGS-18356
MPGS-20272	B65-1017-002	Spring Eye Bushing	12K Front Spring Eye Bushing O.D.: 1 3/4" Outer Sleeve Length: 4 1/16"
MPGS-20295	B65-1008	Spring Pin	O.D.: 1.062" Length: 7.870 C To C: 6.330" Thread Size: M33.5-4.0
MPGS-20589	HWC12501	Nut	Grade 8 Nylon Insert Chassis Nut
MPGS-20790	AS70360	Cabin Air Spring	Cap Number: 7014 Piston Number: 6906 Top Plate Hole/Stud: 1 Bottom Plate Hole/Stud: 1 Extended Height: 14.00" Compressed Height: 4.00" BCR (Logo Color): 10.00" (Yellow) Top Plate Diameter: 2.84" Bottom Plate Diameter: 2.28"
MPGS-20893	HWC01041	Frame Nut	Grade 8
MPGS-20897	HWC06972	Frame Nut	Works w/ MPGS-20518 U-Bolt Kit 1" - 14 High Nut 1 5/16" Tall 1 7/16" Across Flats
MPGS-21702	B13-1000	Spring Pin Bushings	Works W/ MPGS-20295 O.D.: 44.5mm
MPGS-21815	03-01203SPL	U-Bolt Washers	1" Thick Washer Works w/ MPGS-20518 U-Bolt Kit
MPGS-22091	20-08257	Cabin Mount	Height: 1 1/8" I.D.: 21/32" O.D.: 1 13/16" (Nipple) Large O.D.: 3"
MPGS-22243	27-01746	Air Spring Stud	—
MPGS-22338	06-00984	Ball Joint End	—
MPGS-23259	14-14656-4	Exhaust Mount	Multipurpose Bushing O.D.: 1 5/16" I.D.: 3/8"
MPGS-23586	KD2445 HV9990	Leveling Valve	Replacement For Barksdale® Includes Dump Feature Ports: 1/4" NPT
MPGS-24238	—	Spring & Shackle Kit	Numbers included in kit are BSP50-1, 02-01781, 02-01783 & 02-01805
MPGS-24949	29-06016 AS70930	Cabin Air Spring	Top Plate Hole/Stud: 1 Bottom Plate Hole/Stud: 1 Extended Height: 13.80" Compressed Height: 4.70" Top Plate Diameter: 3.09" Bottom Plate Diameter: 2.30"
MPGS-26117	13-04726	Cab Pivot Bushing	I.D.: 3/4" O.D.: 1"
MPGS-26259	B20-6006	Spring Shackle bar	Two Spring Pin Holes Center to Center: 4" OAL: 6.375"
MPGS-E393	10-02498 J20-6005 R250067	Drag Link Assembly	Center To Center: 15.20"



# POWER STEERING COMPONENTS



MPG #:	REPLACES #:	DESCRIPTION:	PRODUCT INFORMATION:
MPGS-C556	4988280	Gasket	Vickers, TRW & LUK Pumps





**Peterbilt of Norfolk**

2001 S 13th St  
Norfolk, NE 68701  
Local: 402-844-4749

**Peterbilt of Lincoln**

6262 Arbor Rd  
Lincoln, NE 68514  
Local: 402-858-8400

**Peterbilt of Sioux City**

4135 Harbor Dr  
Sioux City, IA 51111  
Local: 712-252-4566

**Peterbilt of Des Moines**

3445 Adventureland Dr W  
Altoona, IA 50009  
Local: 515-967-0355

**Peterbilt of Council Bluffs**

2546 Mid America Dr  
Council Bluffs, IA 51501  
Local: 712-325-9700